

JSW Scar Scale 2011 (Classification and Evaluation of Keloids and Hypertrophic Scars)				
Classification (For grading and selection of appropriate treatment methods)			Evaluation (For the judgement of results and following-up)	
1. Human race	Africans	2	Induration	0: Non 1: Weak 2: Mild 3: Strong
	Others	1		
	Caucasians	0		
2. Familial tendency	Clearly exists	1	Elevation	Figure 5 0: Non 1: Weak 2: Mild 3: Strong
	Not clear	0		
3. Number	Multiple	2	Redness of Scars	Figure 6 0: Non 1: Weak 2: Mild 3: Strong
	Solitary	0		
4. Region	Anterior chest, Scapular-Shoulder, Suprapubic	2	Erythema around scars	Figure 7 0: Non 1: Weak 2: Mild 3: Strong
	Others	0		
5. Age at onset	0-30 y/o	2	Spontaneous and pressing pain	0: Non 1: Weak 2: Mild 3: Strong
	31-60 y/o	1		
	61 y/o -	0		
6. Causes	Unknown or minute	3	Itch	0: Non 1: Weak 2: Mild 3: Strong
	Specific wound type	0		
7. Size	Over 20cm ²	1	Total 0-18	
	Under 20cm ²	0		
8. Vertical growth Figure 1	Clearly exist	2	Remarks	Weak: symptoms exist less than 1/3 of the area, or intermittently Strong: symptoms exist in the entire region, or are continuous Mild: Between weak and strong
	Not clear	0		
9. Horizontal growth Figure 2	Clearly exist	3	Total 0-25	
	Not clear	0		
10. Shape Figure 3	Characteristic shape	3		
	Others	0		
11. Erythema around scars Figure 4	Clearly present	2		
	Not clear	0		
12. Subjective symptom	Always exist	2		
	Intermittent	1		
	Non	0		
		Total 0-25		

Remarks

0—5 Normal mature scar
5—15 Hypertrophic scar characteristics
15—25 Keloid characteristics

Ogawa R, Akaishi S, Akita S, Tosa Y, Yamawaki S, Okabe K, Nagao M, Yamamoto J; JSW Scar Scale Working Group. Japan Scar Workshop (JSW) Scar Scale. Available online at; <http://www.scar-keloid.com/en/index.html>

Fig.1 Vertical Growth



Yes



Yes



No

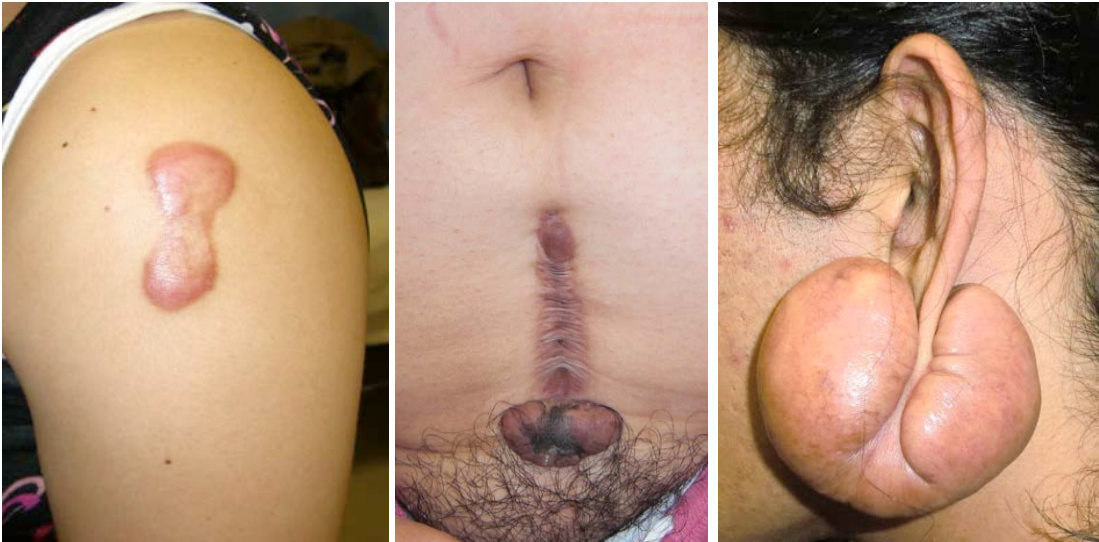
Fig.2 Horizontal growth



Yes

No

Fig.3 Shape



Characteristic, Irregular



Regular

Fig.4 Erythema around scars



Yes



No

Fig.5 Vertical Growth



Strong



Weak



Mild



Non

Fig.6 Redness of scars



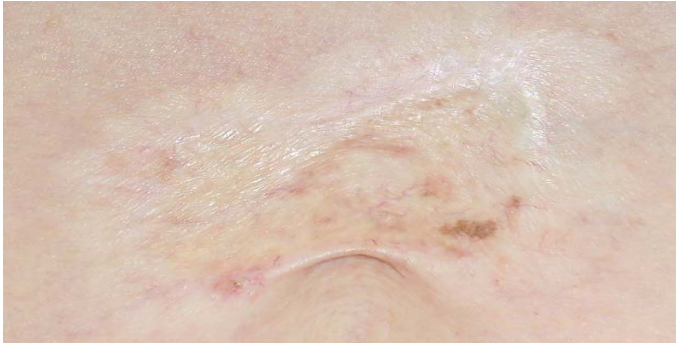
Strong



Weak



Mild



Non

Fig.7 Erythema around scars



Strong



Weak



Mild



Non